

THE INFORMATION SOURCE FOR PRISON & JAIL MANAGEMENT PROFESSIONALS

CORRECTIONS FORUM

WINTER 2022 VOL. 31 NO 1

**NEW!
PUBLISHER'S
PICKS**

**KEY CONTROL
SYSTEMS**

**STREAMLINING RX
DISTRIBUTION**

**SMART
PRISONS**

**APPA
TRAINING
INSTITUTE**

69 Lyme Road, Hanover, NH 03755
CHANGE SERVICE REQUESTED
Corrections Forum

Publisher's Picks



PelipostPRO is a digital screening tool designed for correctional staff to pre-approve photos before being printed and shipped.

With the PelipostPRO you can receive actual photos that are guideline-approved and contraband-free with no public interference. Manually screening mail and processing returns waste time, energy and money. Bring relief to your mailroom staff and increase productivity with no requirement for the purchase of special scanning equipment.

For more information contact:
info@correctionsforum.net



The KeyTrak Guardian system helps correctional facilities keep control of keys and other assets like radios, TASERS, medical supplies, firearms, and more. The Guardian system keeps keys and assets locked down in a key panel or lockers and automatically logs who accesses the system and when. This creates a verifiable audit trail that makes shift audits an easy process without sacrificing security.

For more information contact: info@correctionsforum.net



The Active Tool Suite by Upstream is an electronic monitoring system based on an offender smart watch and offers a number of new possibilities for communication, management, and real-time, interactive supervision of offenders. Beyond GPS and RF modes capability the main features include the ability to text messages directly on the "bracelet," curfew and appointments notices can be sent and displayed, and it provides automatic alarm management, which actively helps the monitoring officers to take the appropriate actions.

For more information contact: info@correctionsforum.net

The Intercept by TEK84 provides internal and external threat detection with x-ray technology. It detects both metallic and nonmetallic threats including weapons, drugs, cell phones and other contraband that may be secreted under clothing and within the body.

Using low dose x-rays, the Intercept produces a quality image by vertically scanning a stationary subject, head to toe, in just 3.8 seconds. The unit arrives fully assembled on wheels, which makes for easy installation and relocation.

For more information contact: info@correctionsforum.net



KEY CONTROL

The security of any facility is only as strong as the security of their keys.

Key control is a constant concern for facilities managers, loss prevention teams and other security stakeholders in prisons and jails. Lost keys, undocumented duplicates and misplaced assets such as OC spray or TASERS can jeopardize the entire system and cause undue stress. In contrast, frequently auditing keys and key holders can close gaps that permit breaches and offer a dramatic boost in security.

Cloud-based records management systems, for example, can manage all key control data, according to Cita Doyle, LPQ, VP Sales & Marketing with Colorado security firm Instakey, who emphasizes that, with an effective system, data should be immediately accessible from any smart device. Such functionality provides secured access to data from anywhere in the world with an internet connection.

Manual methods of key con-

control that involve handwritten log-books or pegboards are less effective for restricting access to keys and maintaining an audit trail, concurs a blog by KeyTrak. Manual methods do not ensure keys are in the right hands when needed or secured when they are not, and items can go missing for an unnecessary period of time until a manual audit is conducted. To enforce best security practices and increase accountability in a prison, they suggest three best practices: 1) keep keys secure by considering an electronic control system, 2) utilize a lockdown system whereby only approved users can have access to certain keys and others are locked into place and 3) receive alerts for missing or overdue keys.

The KeyTrak Guardian system helps to keep keys, radios, TASERS, medical supplies, firearms and more, out of the hands of inmates. Authorized users must enter a password or use the integrated fingerprint

scanner to access the system. In addition, administrators can enhance system security by requiring a second login from a supervising officer before the original user can check out an item.

Once logged in, users can request the key or asset to which they need access. The Guardian makes retrieving an item from the system a quick and easy process without sacrificing the security of the individual keys or assets. The software logs every action, so administrators have access to a 100% verifiable audit trail of exactly who accessed the system, what key or asset they requested, when they took it, why they took it, and when the user returned it. "This automated process makes performing audits every shift a simple and easy process that reduces human error," says Andy Wright, director of sales.

System alerts, which can be in the form of an audible alarm, an on-screen alert, or an email noti-



KSI's family of products offers solutions to secure and monitor assets such as keys, OC spray, weapons and radios. All key boxes, lockers and OC cabinets can be controlled from one central system.

fication, let administrators know when keys or assets aren't returned to the system in a specified timeframe.

Have different sized items? The Guardian's varied modular panel options make it easy to tailor the system to a facility's specific needs. For example, a control room might need several key panels for cell keys, while an intake area would need lockers for storing visiting officers' weapons. Facility managers can pick and choose which modules work best for their use.

The locker modules greatly expand a facility's ability to secure mission-critical items, like radios and TASERS, and create a smoother experience for visiting officers, explains Wright. "Many of our customers use locker modules to store and secure firearms brought in by officers who are dropping off inmates from other jurisdictions or municipalities.

"The Guardian makes this process a breeze since an officer can easily log in to the system, open a locker, place a sidearm into the locker, and close the locker, all

while keeping a hand on the inmate. This allows an officer to keep an inmate under control during every intake step, secure the firearm as soon as possible once inside a facility, and quickly go about their business," Wright says.

Safe & Secure

Key Systems, Inc. (KSI), another industry leader in physical asset protection, monitoring, and key security management in the correction industry, offers electronic key boxes, lockers, and OC cabinets to secure your most important assets with the highest level of safety and security, the company says.

It offers engineering solutions to secure and monitor assets such as keys, OC spray, weapons and radios. First, its Security Asset Manager™ (SAM) key box is designed to entrap a corrections officer's most sensitive small format, large format, and Mogul keys. The key cut and shape is hidden from view and locked into the stainless-steel panel. Its patented Tamper-Proof Key Ring®

technology provides keys hanging on the key ring an added layer of protection. Each ring has a serial number, smooth seal, and cannot be opened without detection. In addition, handcuffs can be secure and distributed in a specially designed handcuff SAM.

KSI locker systems are customizable to your assets size and expandable to your facility's needs. In addition, a unique electronic ID can be attached to radios, guns, cameras, and other assets. The electronic ID attachments allow the GFMS™ software to know if the asset is present inside the locker. KSI also offer self-serve lockers for visitors and staff to secure prohibited items while in your facility.

"KSI's powerful GFMS Software serves as the backbone to your system and your interface to configure access, monitor usage, and receive alerts and updates," says Brian Ferraro, marketing. "Administrators have full control with custom alerts and audit reports. All key boxes, lockers and OC cabinets can be controlled from one central system."



Medeco's IKC permits authorized personnel to self-serve/retrieve keys without an administrator by accessing keys via biometric fingerprint, PIN, and/or Prox Card.

A newly enhanced OC spray cabinet can administer OC canisters to officers quickly and securely, Ferraro adds. Upon return, each canister is identified and weighed on the integrated scale. If the weight is above the user set minimum, the cabinet door opens, and the canister is returned to the OC cabinet. If the canister is under weight the door remains locked and the officer is directed to dispose of the canister into the locked disposal slot. Alerts can be sent to administrators when there is a weight change or discharge detected.

Lock It Up

The Intelligent Key Cabinet (IKC) from Medeco is a robust and flexible key management system that securely stores, distributes, and tracks every key in your facility, the company reports.

A complete storage and control solution, the IKC is an electronically controlled steel cabinet that restricts access to keys. Authorized personnel self-serve/retrieve keys without an administrator by accessing keys via biometric fingerprint, PIN, and/or Prox Card. The built-in LCD screen guides

a key or other asset it enables identification by administration software and all its activity is recorded. This helps ensure keys never fall into the wrong hands. Not only does the IKC add multiple layers of security to mechanical keys, it allows corrections managers to see analytics not previously available.

The self-serve capability of the IKC also improves efficiency. Since the



The KeyTrak

Guardian system helps to keep keys, radios, TASERS, medical supplies, firearms, and more out of the hands of inmates. The software logs every action, so administrators have access to a 100% verifiable audit trail.

authorized personnel through the entire process, according to Gene Cronin, XT and Nexgen product line manager.

The IKC is perfectly suited for keys and other assets requiring a high level of security and accountability, notes Cronin, "thus making it ideal for jails, prisons, and other behavioral health settings." He furthers: "When a key is lost in a high security facility, immediate action must be taken. Oftentimes this means rekeying the entire facility, which is both costly and cumbersome." The IKC helps mitigate the risk from lost keys by using exclusive iFob tracking technology to track mechanical keys. When an iFob is secured to

LCD screen guides the user through the retrieval and return process, an employee does not have to stand around and hand out/collect keys.

Furthermore, when the IKC is paired with the XT Intelligent Key system, access rights to openings can be quickly revoked, granted, or scheduled, explains Cronin. It also comes with a visual analytics platform. Finally, auditing helps maintain regulatory compliance, and gives the supervisor the ability to see which openings were accessed when and by whom.

The security of any facility is only as strong as the security of their keys, sums up Cronin. "The Intelligent Key Cabinet not only increases the level of key control at your facility, it also helps increase efficiency....And when partnered with the XT key system it allows you a higher level of control."

Continues on page 33



Losing Keys is Losing Control

Control is everything. Losing even one key can disrupt measures you've taken to secure your facility. We can help.



866.838.0178 | keytrak.com/correctionsforum

Master Key Software

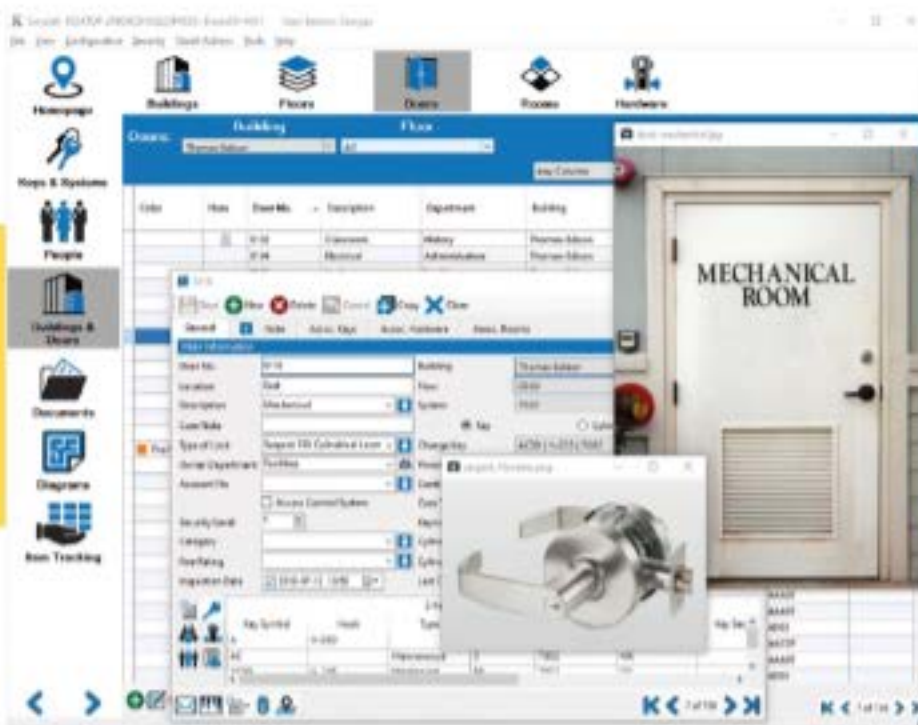
SimpleK is an intuitive software program that streamlines and simplifies the complexities of master key and facility management. Security personnel, facility managers, institutional locksmiths, and others involved in key control use this paperless, scalable tool to manage keys and keying systems of all sizes.

Some of SimpleK's security features include full visibility of audit trails, outstanding keys, overdue keys, and managing the rekeying process, says Jonathan Bedard, SimpleK applications and development manager. "SimpleK's flexible software allows you to import maps and floor plans so you can see who has access to each individual door, the associated keys, and hardware on the opening." It also has a solution that allows you to track all kinds of equipment within a correctional facility (weapons, walkie talkies, cell phones, computers, vehicles, etc.).

A good example where this worked is a corrections facility that was managing their master key systems, keys, and assets with Excel spreadsheets and paper. They were about to rekey a portion of the facility and wanted to tighten the policy on the distribution of new keys and assets.

As a first step, they imported their existing data from Excel spreadsheets to SimpleK (keys, doors, key rings, assets, etc.). The master keying data was mostly on paper, but they used the SimpleK Master Key System Generator to automatically create the system with keys and bittings. They were able to use the mobile application to do onsite surveys of doors and hardware.

They assigned the new cores to doors with the access matrix in SimpleK, used the core pinning calculator to prepare the cores and cut the new keys. They also configured the floor plans with door locations. This allowed them to see who has access to each indi-



SimpleK is a software program that streamlines and simplifies the complexities of master key and facility management.

vidual door, the associated keys, and hardware on the opening.

For the distribution of the new keys, they used the software to assign the keys to specific keyholders. Then, when they issued keys, they had the holders sign directly for their keys after reading the new key policy on a tablet. They also created a detailed inventory of all key rings with the list of keys assigned. They did the same thing for the management of other assets including security gear, communication devices, etc.

They continue to use SimpleK to conduct audits and quickly generate reports and review the history of transactions. "SimpleK helped them bring their key control to the next level," Bedard sums up.

Manual Vs. Automatic

Compared with a peg board or loosely secured cabinet where there's no way to ensure an employee only takes what she needs and/or returns it in a timely fashion, electronic key systems greatly enhance control. The tracking abilities "help ensure keys and other assets, like radios, TASERS, and firearms don't fall into the hands of inmates. This helps keep staff safe while they perform their daily tasks and pro-

motes a security-minded approach to routine activities like accessing keys and radios," says KeyTrak's Wright. "Likewise, automatically logging who accessed keys and when helps staff be proactive about returning items to the system. This limits the potential for keys or assets to go missing, keeps them available for the next user, and reduces unnecessary lock-downs as your staff scrambles to find missing keys. Efficient and effective operations reduce stress on officers and inmates alike." ❁

For further information:

KeyTrak
info@keytrak.com
866.838.0178
www.keytrak.com/correctionsforum

KSI
Mike Stark, mstark@keystorage.com
585.924.7830
www.keystorage.com

Medeco
Gene Cronin
Gene.cronin@assaabloy.com
732.320.0287

SimpleK
Jonathan Bedard
info@simplek.com
888.601.7806

NEW PRODUCTS

Mattress Covers



Ideal alternative to a fitted sheet. Open-end cover slips over mattresses, like a pillowcase, for quick slip on and removal.

1-800-334-9880
www.bobbarker.com

BobBarker
America's Leading Detention Supplier

Losing Keys Is Losing Control

Know who took keys.
Maintain an audit trail.
Keep control.



866.838.0178
keytrak.com/correctionsforum

COMPLETE EYEGLASSES \$14.95



RX Eyeglasses
On-Site Optometry
On-Site Ophthalmology Testing



1000 Facilities Nationwide
44 States - Federal in all 50 States
Correctional Vision Care Since 1983



Institutional Eye Care LLC
website: institutionaleyecare.com
email: info@institutionaleyecare.com

SEALED SEAM TPU PILLOW

100% sealed seams lock out liquids, odors, and contaminants. Concealed breathable vent cannot be picked or ripped apart.



1-800-334-9880
www.bobbarker.com

BobBarker
America's Leading Detention Supplier

AD INDEX

Page No.

Advantage Military.....	5
Black Creek Integrated Systems Corp.	29
Bob Barker	35
Centurion	2
Chestnut Ridge Foam, Inc.....	19
Institutional Eye Care	34
Keefe Group	36
Keytrak, Inc.....	27,34
Laundry Loops.....	8
Medi-Dose Company.....	4,8,15
Nebraska Department of Corrections	4
RemoteCOM.....	13
StunCuff Enterprises, Inc.	6
STV Architects, Inc	6
TrinityServices Group, Inc.	23
Union Supply Group	31
Vistar Corporate	9
Western Union	7
Wexford Health Sources	17

This advertisers index is provided as a service to our readers only. The publisher does not assume liability for errors or omissions.